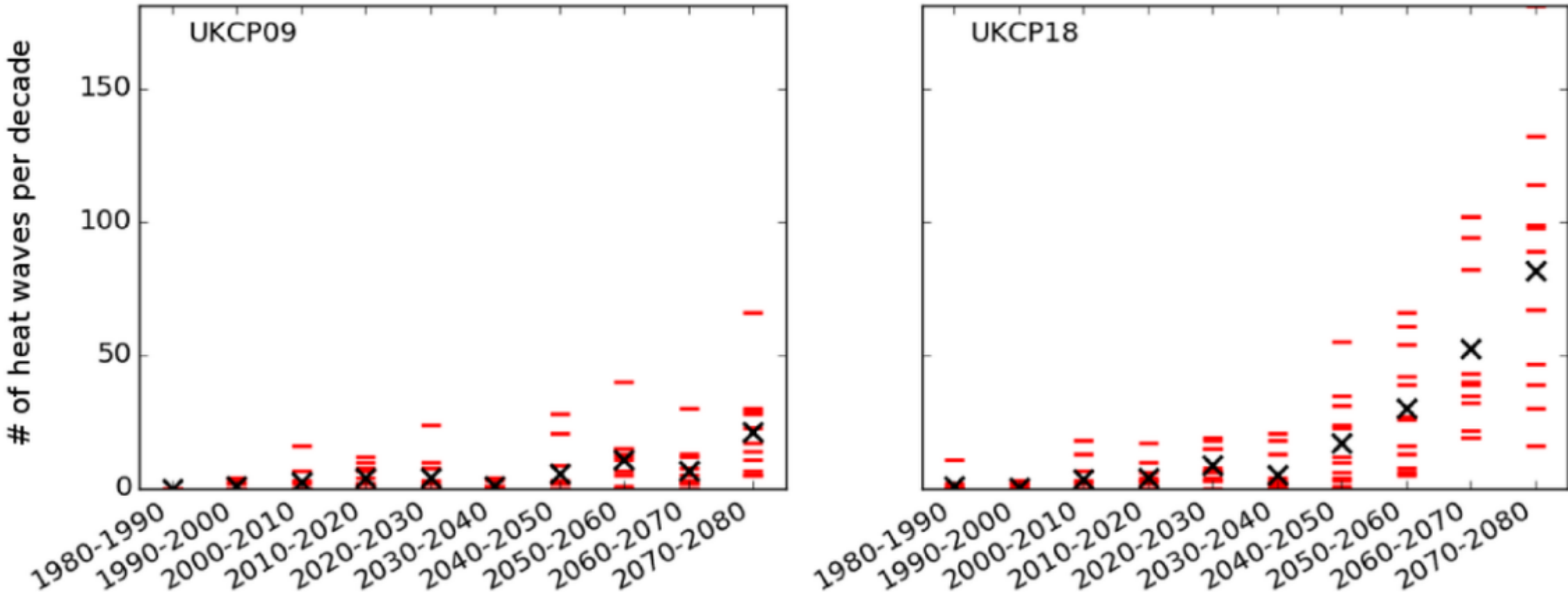


UKCP18 – Results

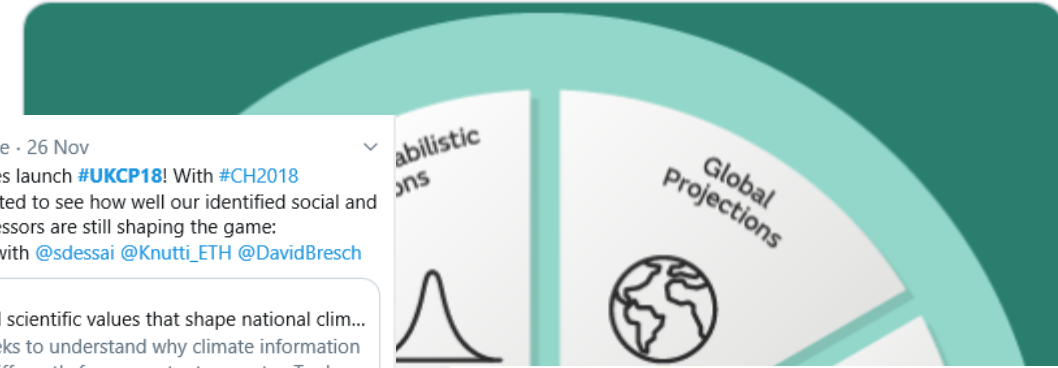
Projected heat wave frequency in Southern Scotland



UKCP18 – Response



Met Office Science @MetOffice_Sci · 23 Nov
#UKCP18 launches Mon 26 Nov. Cutting-edge climate science will provide a range of climate projections in greater spatial detail designed to help decision-makers assess their exposure to climate change in the UK and globally out to 2100 @DefraGovUK @metoffice @beisgovuk @EnvAgency



Friends of the Earth @friends_earth · 26 Nov
10 years after the UK's Climate Change Act, the Met Office releases its UK Climate Projections 2018 report, warning of summers 5.4 c hotter by 2070.
"We know, more than ever before, the urgency of acting" says @MichaelGo So act! bbc.co.uk/news/science-e...

#UKCP18 #CCAat10



BBC NEWS
UK summers could be over 5C warmer by 2070
Summers as hot as 2018 could be the new normal for the UK by 2050, according to a Met Office study.
bbc.co.uk



Maurice Skelton @SkeltonMaurice · 26 Nov
Today our British climate colleagues launch #UKCP18! With #CH2018 published 2 weeks ago, I'm interested to see how well our identified social and scientific values from their predecessors are still shaping the game: link.springer.com/article/10.100... with @sdessai @Knutti_ETH @DavidBresch

The social and scientific values that shape national clim...
This paper seeks to understand why climate information is produced differently from country to country. To do ...
link.springer.com

4 Retweets 7 Likes



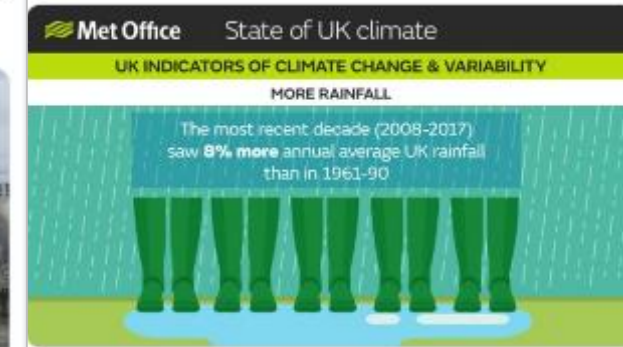
Toby Willison @TobyWillisonEA · 26 Nov
Sea level will rise between 0.4m and 1.0 m by 2100 according to #UKCP18 flood defences like #ThamesBarrier fundamental



2 Comments 6 Retweets 12 Likes



Met Office Science @MetOffice_Sci
In the most recent decade (2008-2017) the UK has seen 8% more annual average rainfall than in 1961-90 #UKCP18 is launched next week and will provide latest estimates of changes to winter, summer & annual rainfall out to 2100 under different greenhouse gas emission scenarios



8:29 am · 21 Nov 2018 - Twitter Web Client

11 Retweets 18 Likes

19 Comments 271 Retweets 281 Likes

UKCP18 – Response



Soil Association @SoilAssociation · 26 Nov

On 10th anniversary of the Climate Change Act, @michaelgove launches #UKCP18 report, a prediction of how our climate is changing. Agriculture has a role to play in reducing #emissions & preparing for #climatechange but farmers must be supported in the #AgBill & associated p

Soil Association @SoilAssociation

We support the recent @theCCCuk reports calling for l that our land use supports #sustainable food producti #emissions & prepares for #climatechange. Farmers ho

Show this thread



10 17



Scottish Natural Heritage @nature_scot · 26 Nov

With warming and the risk of less late-lying mountain snow we have set up the Scottish Snowbed Vegetation Monitoring Network, centred on the #Cairngorms. This will allow us to track the impact of a changing climate on one of our more sensitive upland habitats #UKCP18



iCASP @YorkshireiCASP · 26 Nov

Yorkshire is at the forefront of climate resilient catchment planning - download our new shiny brochure here: bit.ly/2TNRtBe #ukcp18



2 5



ADA @ADA_updates · 27 Nov

Good to see @johnsed100 from @W41D8 on @looknorthBBC yesterday talking about #Wrangle Sea Banks following release of #UKCP18. Such sea dikes in the Netherlands are termed 'Guardians' for good reason. Yesterday's #climate projections are the data we need to prepare now and act.



4 14



Fossil Free UK @FossilFree_UK · 26 Nov

#ClimateChange is happening now, and we need urgent action to tackle the root causes. Sign up now for email updates on how you can join in: act.350.org/sign/join-clim... #UKCP18

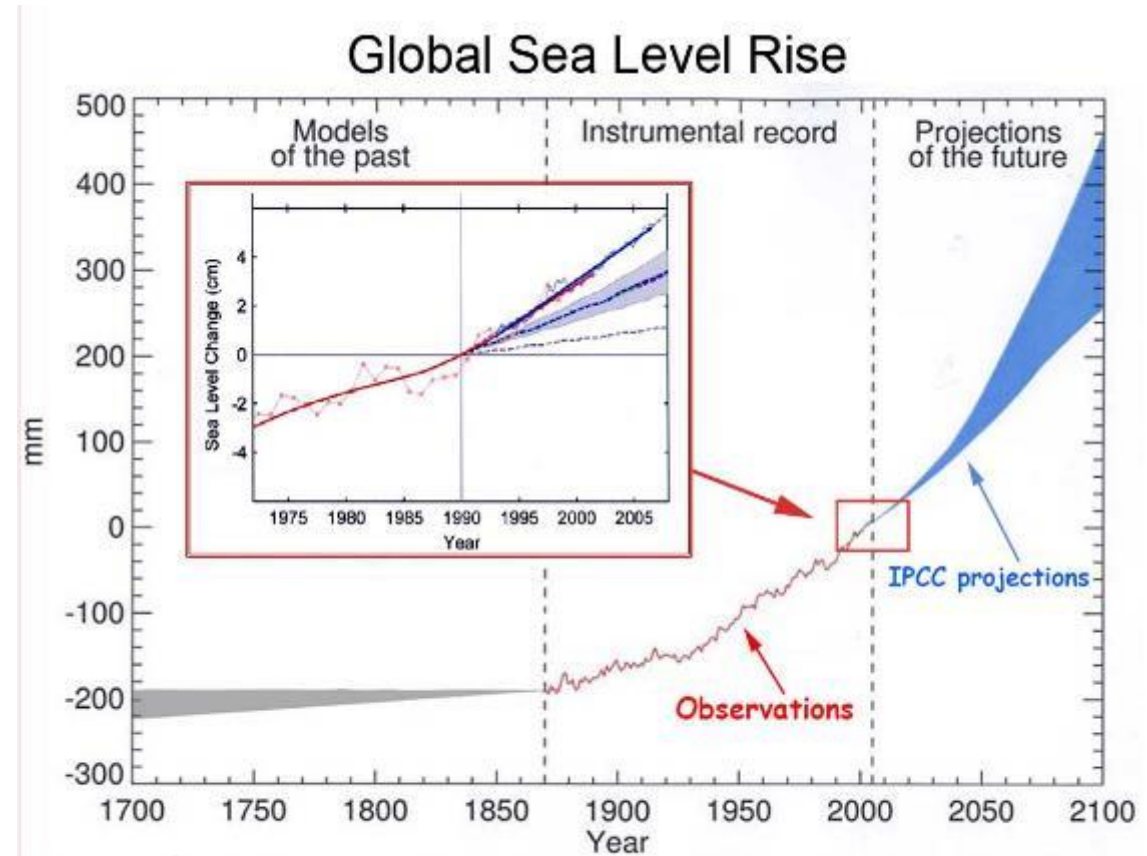


Climate change is happening now. We have to act. Climate change is happening. We have to act. Here's how you take the first step. act.350.org

3 8

Sea Level Rise in Wales

- Predicted Sea Level Rise in the UK and Wales
 - UK: 12 - 76cm by 2095
 - **Wales: 21 - 68cm by 2095; (21-190 cm for low probability)**
- Flood risk in Wales
 - 220,000 properties or around 11% are at risk of flooding
 - 65,000 at significant likelihood of flooding
 - £200 million of damage each year on average



From: Anny Cazenave, Ocean Surface Topography Science Team 2008 meeting, Nice, November 2008,

Coastal Floods

- Rhyl 2013
- Aberystwyth 2014

