

Irish Sea Maritime Forum
May 21st 2013, Glasgow



Transboundary Planning in the European Atlantic

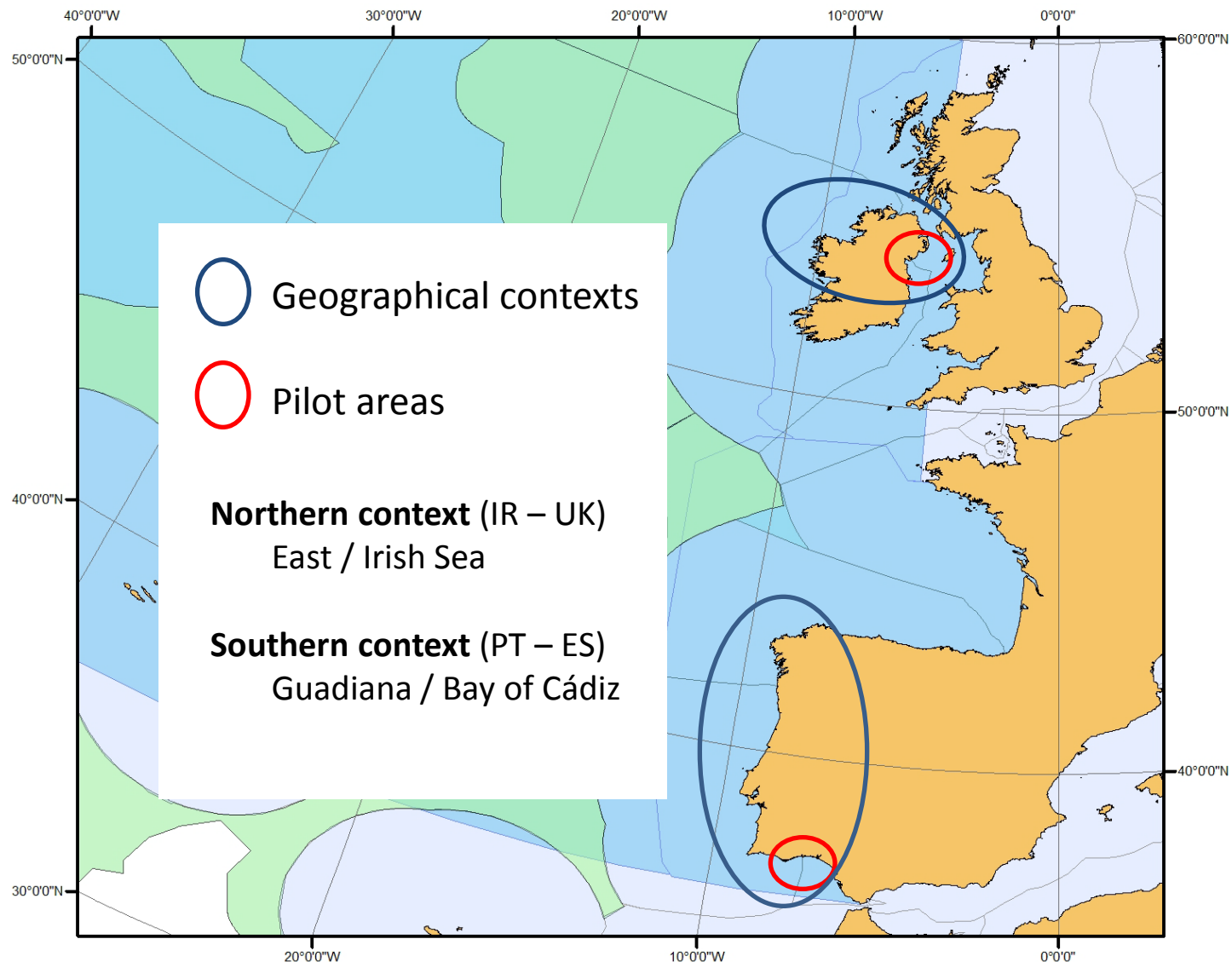
Stephen Jay, University of Liverpool, UK

- Response to call MARE/2012/08: *Project on Maritime Spatial Planning in the Atlantic, including Celtic Sea and Bay of Biscay*
- Following recent projects for the Baltic and North Seas
- Aims to deliver a commonly-agreed approach to cross-border MSP in the European Atlantic region
- To be trialled in two contexts





- Regional approach
 - 10 partners
 - from Ireland, Portugal, Spain and UK
 - Expert advisors
 - from all partner nations and France
 - regional organisations
 - OSPAR, CPMR Atlantic Arc Commission, South Western Waters RAC
- Two distinctive contexts
 - North: Ireland and UK
 - South: Portugal and Spain
 - Variations
 - implementation of MSP
 - coastal and maritime pressures
 - policy priorities
 - traditions of planning

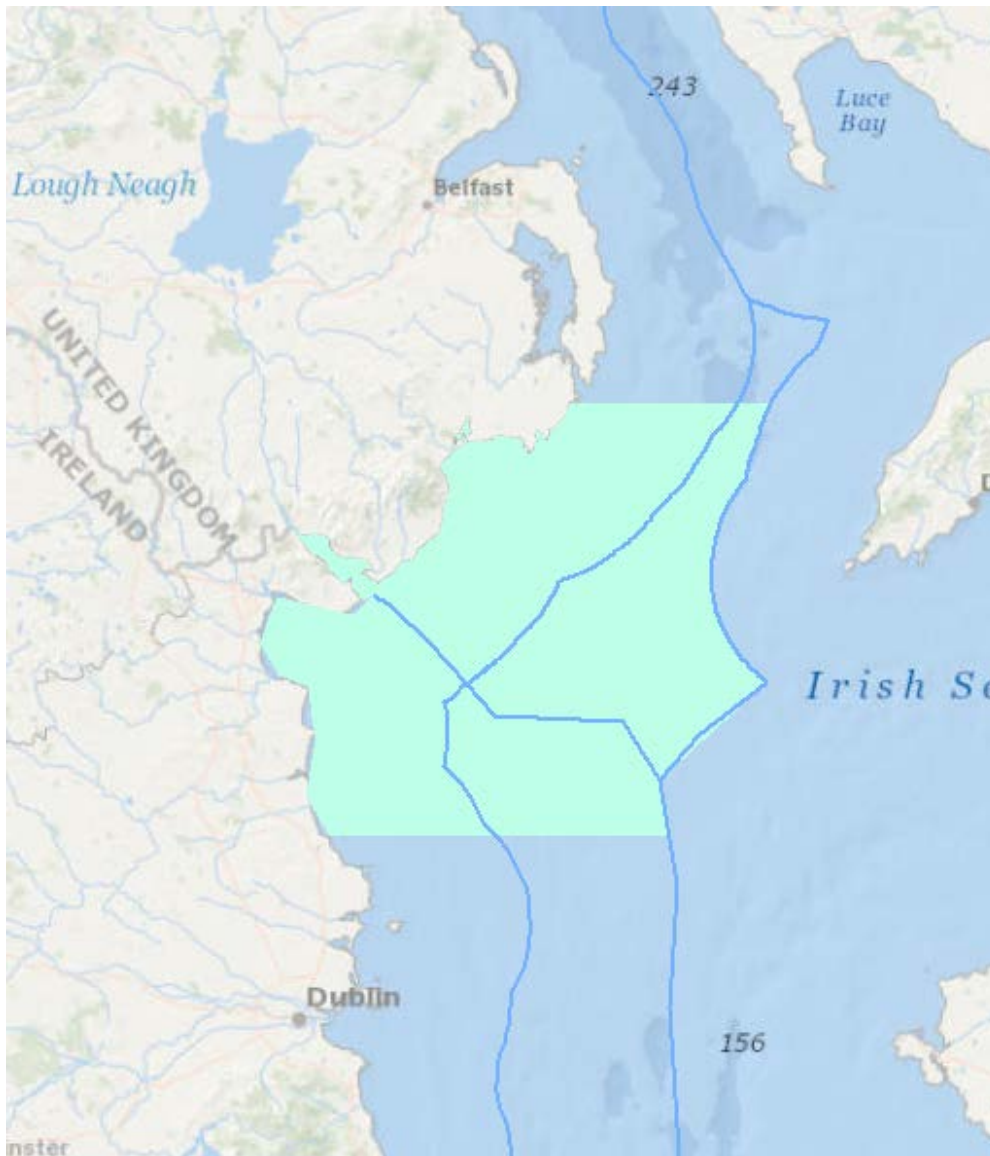


- Sensitivity to national MSP competences
- Project brief: “greatest possible involvement of relevant authorities”
- Bilateral stakeholder engagement



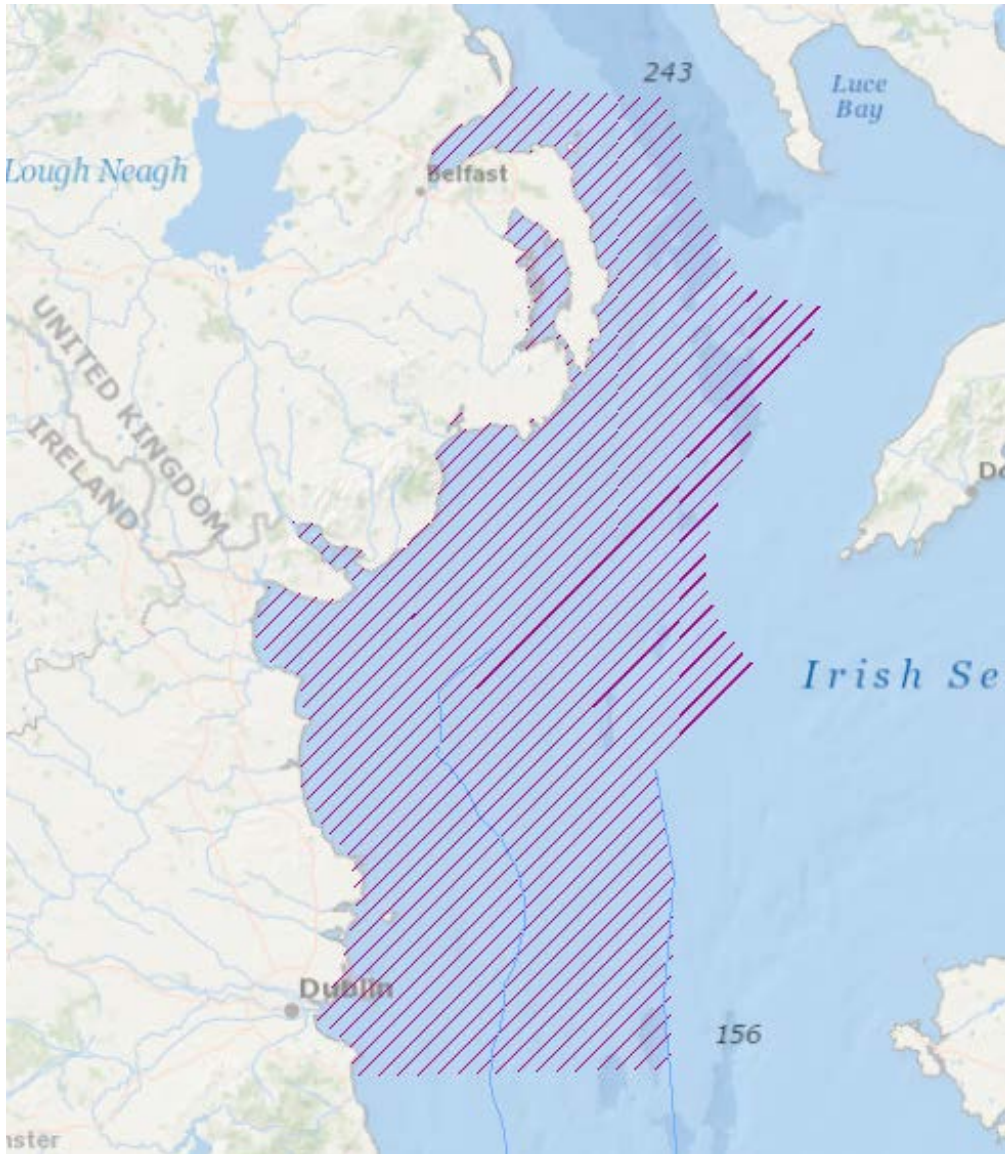


- Conceptual framework
 - legal, technical and stakeholder aspects
- Initial assessment and selection of pilot areas
- Developing MSP outcomes
 - Setting objectives
 - Data-gathering
 - Analysing context
 - Geographical representation
 - Developing options
 - Stakeholder engagement
 - Evaluation
- Communication



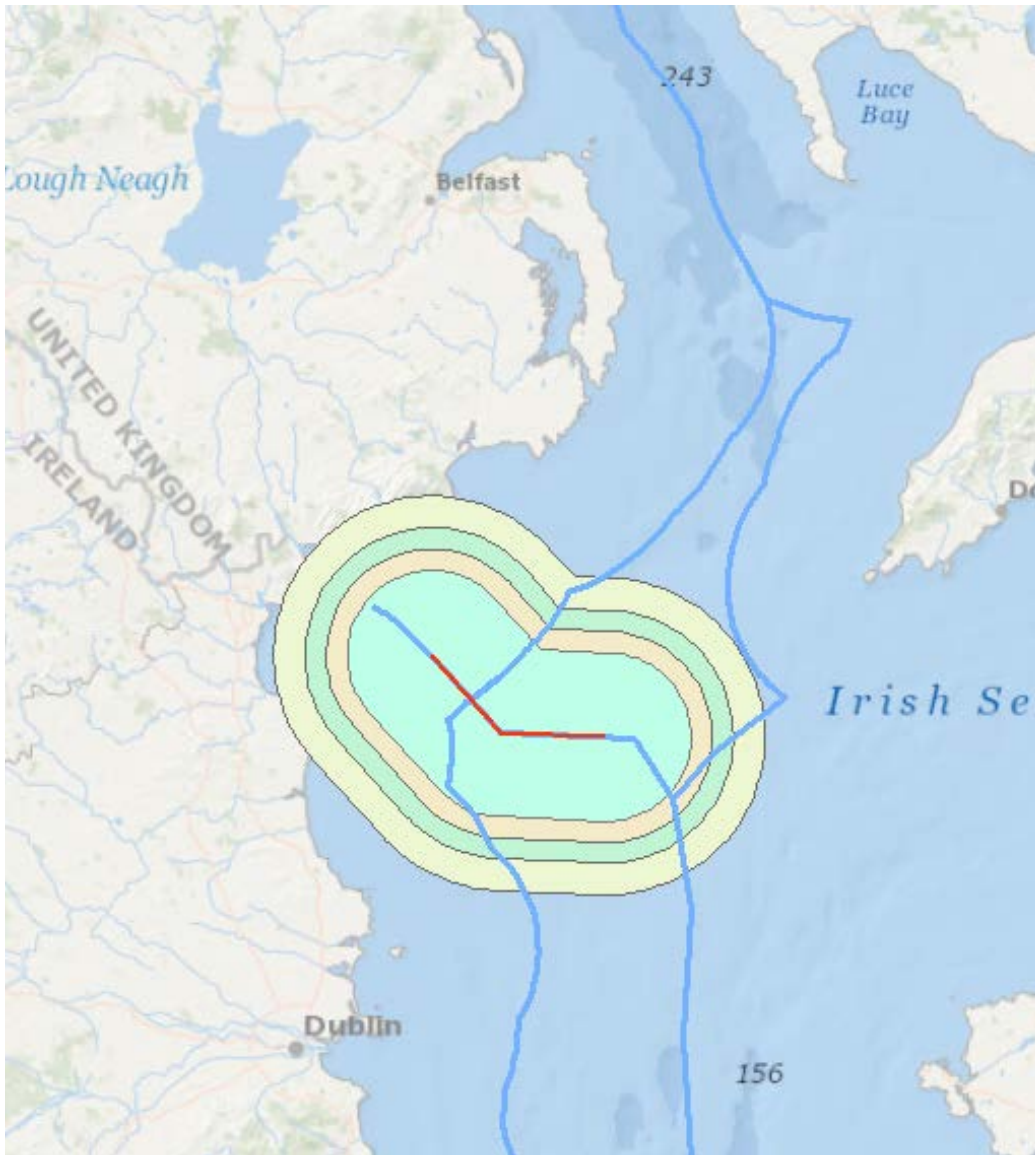
ARBITRARY ZONE

- Centred on national marine border
- Reaching a set distance from the border
- Constrained by outward national limits (territorial waters / exclusive economic zones)



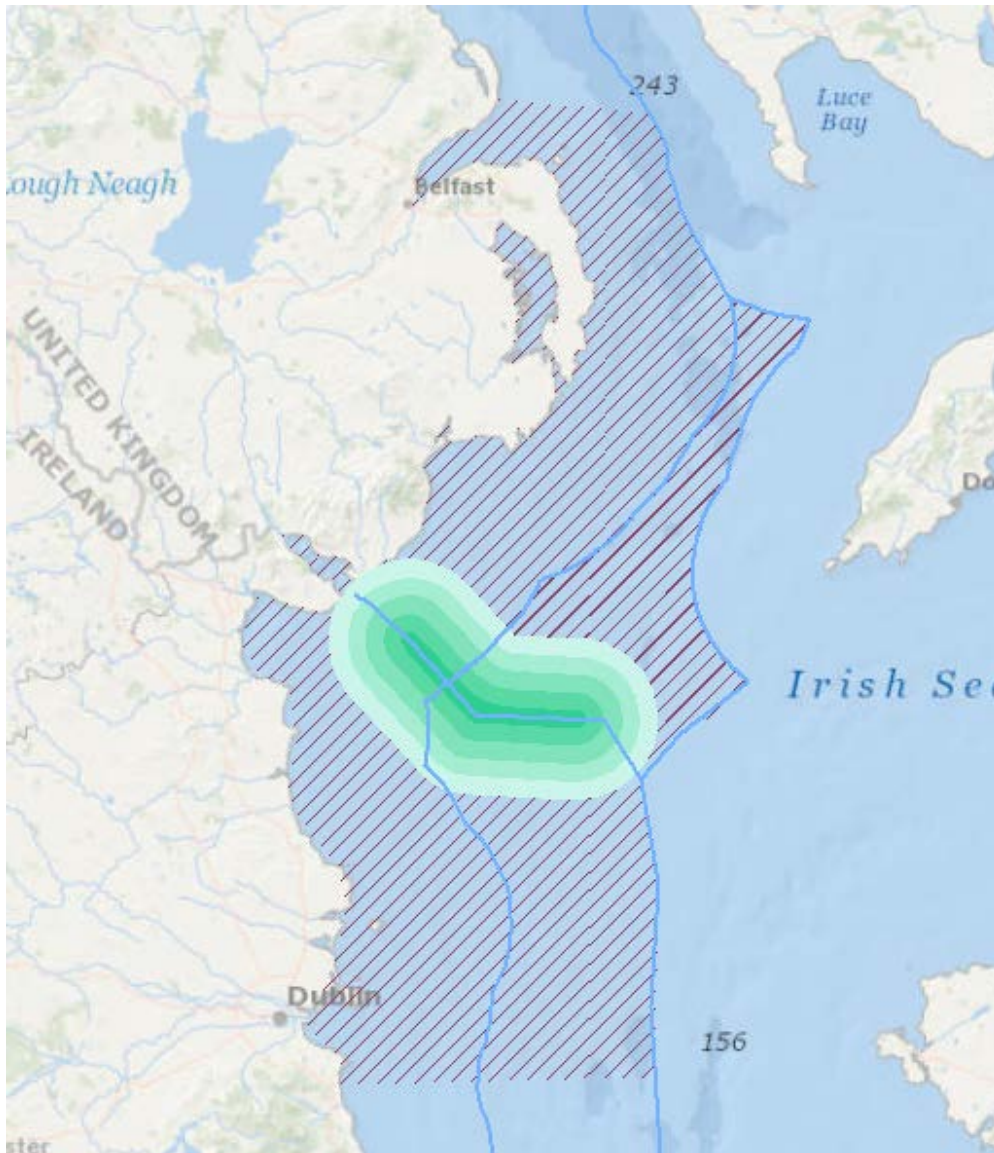
EXTENDED ZONE

- Recognising long-distance transboundary effects
- Taking in maritime influence of Dublin and Belfast



BUFFER ZONES

- Recognising decreasing levels of transboundary influence with distance from the border
- May be related to the potential reach of different activities and interests



COMBINATION

- Inner zones of key transboundary effects
- Outer zone of wider influence

- **Landscape / seascape & ecology**

- Varied coastal and marine features: hills, drumlins, sea loughs, estuaries, bays, dunes
- Sand and mud flats: rich fauna supporting wintering waterfowl; Natura 2000 sites

- **Bathymetry & oceanography**

- Gently sloping seabed 20- 100 m with deeper north-south channel
- Stratified hydrography; low wave energy

- **Socio-economic context**

- Strategically important channel between Belfast and Dublin
- Regional industrial, retail and service centres
- Settlements with cultural and traditional economic links to the sea



- **Ports and shipping:** significant movements north-south and east-west
- **Fishing** communities, with associated fleet maintenance and fish processing industries
- Active investigation of wind energy potential in ROI & NI
- **Recreational and tourism** interests and potential
- **Oil and gas** exploration
- Marine dredging and disposal
- Telecommunications cabling
- **Aquaculture**
- **Environmental** interests



- Newry, 12th March 2013
 - 11 ROI, 12 UK & 6 cross border participants
- **Aims**
 - Discuss stakeholder understanding of transboundary MSP
 - Gain input on geographical focus and extent of the pilot area
 - Examine methods and value of stakeholder engagement
- **Some key perspectives**
 - Wealth of cooperation and cross-border experience to build on
 - Shared approaches to maritime regulation need developing
 - Wide range of views on appropriate geographical area to include
 - Engagement to be equitable across borders

1. University of Liverpool (UK)
2. Directorate General for Marine Policy (PT)
3. Ministry of Agriculture, Food and Environment (ES)
4. Department of the Environment Northern Ireland (UK)
5. University College Cork (IR)
6. University of Aviero (PT)
7. University of Algarve (PT)
8. Spanish Institute of Oceanography (ES)
9. Centre for Studies and Experimentation on Public Works (ES)
10. University of Seville (ES)



1. OSPAR
2. CPMR Atlantic Arc Commission
3. South Western Waters Regional Advisory Council
4. Maritime Institute (IR)
5. Department for Environment, Food and Rural Affairs (UK)
6. University of Nantes (FR)
7. Secretariat General for the Sea (FR)
8. Portuguese Environmental Agency (PT)
9. Spanish Hydrographic Agency (ES)



Visit www.tpeamaritime.eu



National contacts

- ES Ms Lola Ortiz Sánchez dortiz@magrama.es
- IR Mr Cathal O'Mahony c.omahony@ucc.ie
- PT Ms Margarida Almodovar margarida.almodovar@dgpm.gov.pt
- UK Mr Gerard McClarey Gerard.McClarey@doeni.gov.uk

Project coordinator

- Dr Stephen Jay stephen.jay@liv.ac.uk

Thank you for your attention!

