



Marine
Management
Organisation

Marine Planning: Where Are We Now? Irish Seas Maritime Forum

Hannah Marriott
Marine Planner

21 May 2013



Current MMO planning activity

- Introduction
- MMO – who we are and what we do
- Structure
- Legislative basis for marine planning
- Stakeholder Engagement
- Approach to Marine Planning
- What's in the plan?
- Process
- Lessons Learnt

South Marine Plan Area Activity

North West Marine Plan Area knowledge

How you can help

Introduction

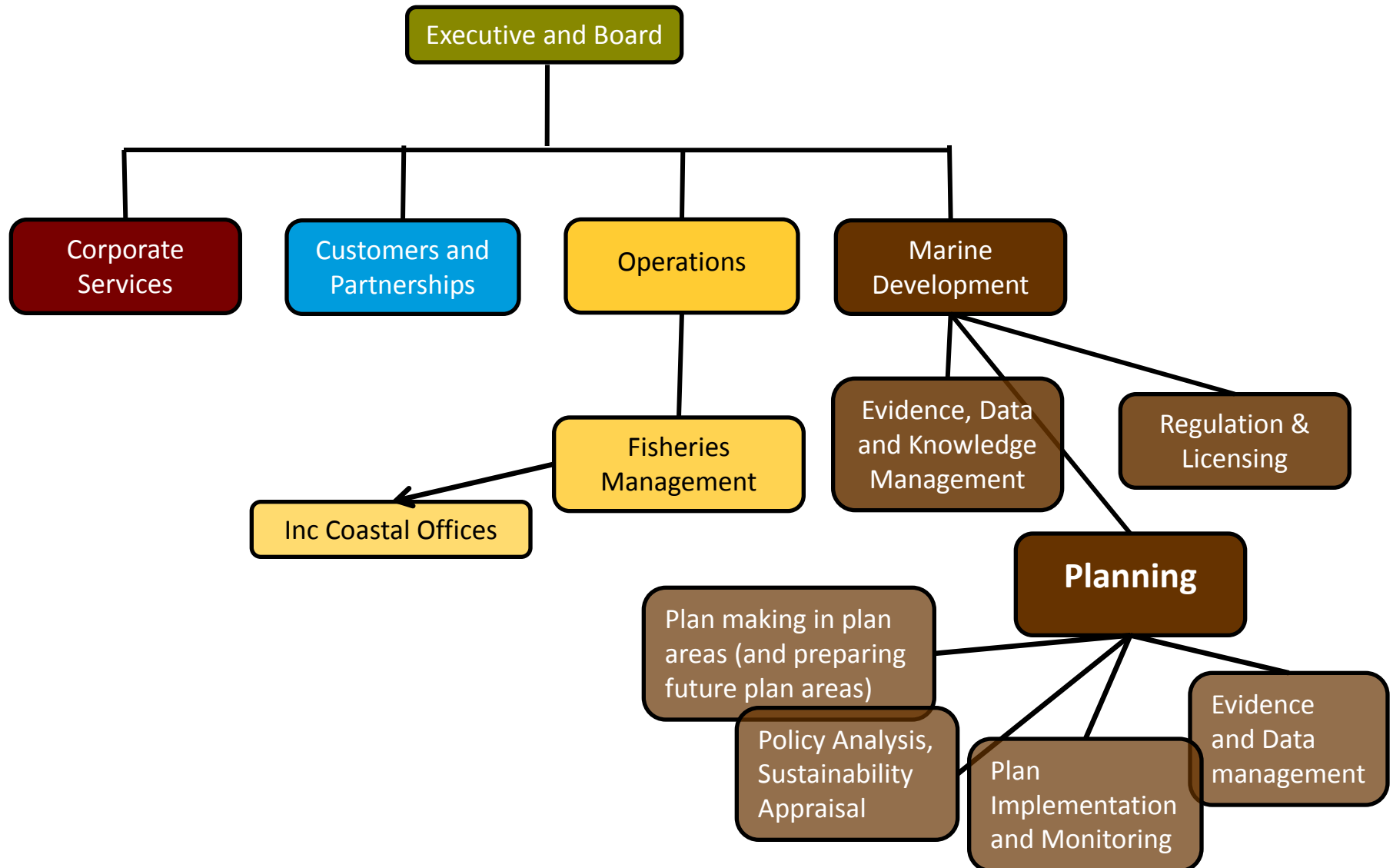
- Who we are
- **Planning and Plan Areas**, where and why
- **East Inshore and Offshore** Plan Areas, where it all began
- Activity summary to date
- **Draft East Inshore and Offshore Marine Plans**
- **South Inshore and Offshore** Plan Areas, Location, Identification, Implications from the East
- **The way forward:** future activities and the areas not currently being planned

The Marine Management Organisation – who we are and what we do

- NDPB sitting primarily under Defra but with cross-departmental support including DCLG
- Main responsibilities:
 - implementing a new marine planning system
 - implementing the marine licensing duties
 - managing UK fishing fleet capacity and UK fisheries quotas
 - manage a network of marine protected areas with NE and JNCC
 - responding to marine emergencies



The MMO- organisational structure



Legislative basis for Marine Planning

MCAA

- Marine and Coastal Access Act provides legislative basis for a marine planning system

MPS

- Marine Policy Statement is the UK framework for marine plans and taking decisions

Marine
Plans

- Marine Plans will translate the MPS into detailed policy and spatial guidance for each Marine Plan area

- Marine plans will inform decision-making relating to a plan area. The MPS does this in absence of a plan.
- Development of marine plans delegated to MMO, but Defra Secretary of State is the Planning Authority

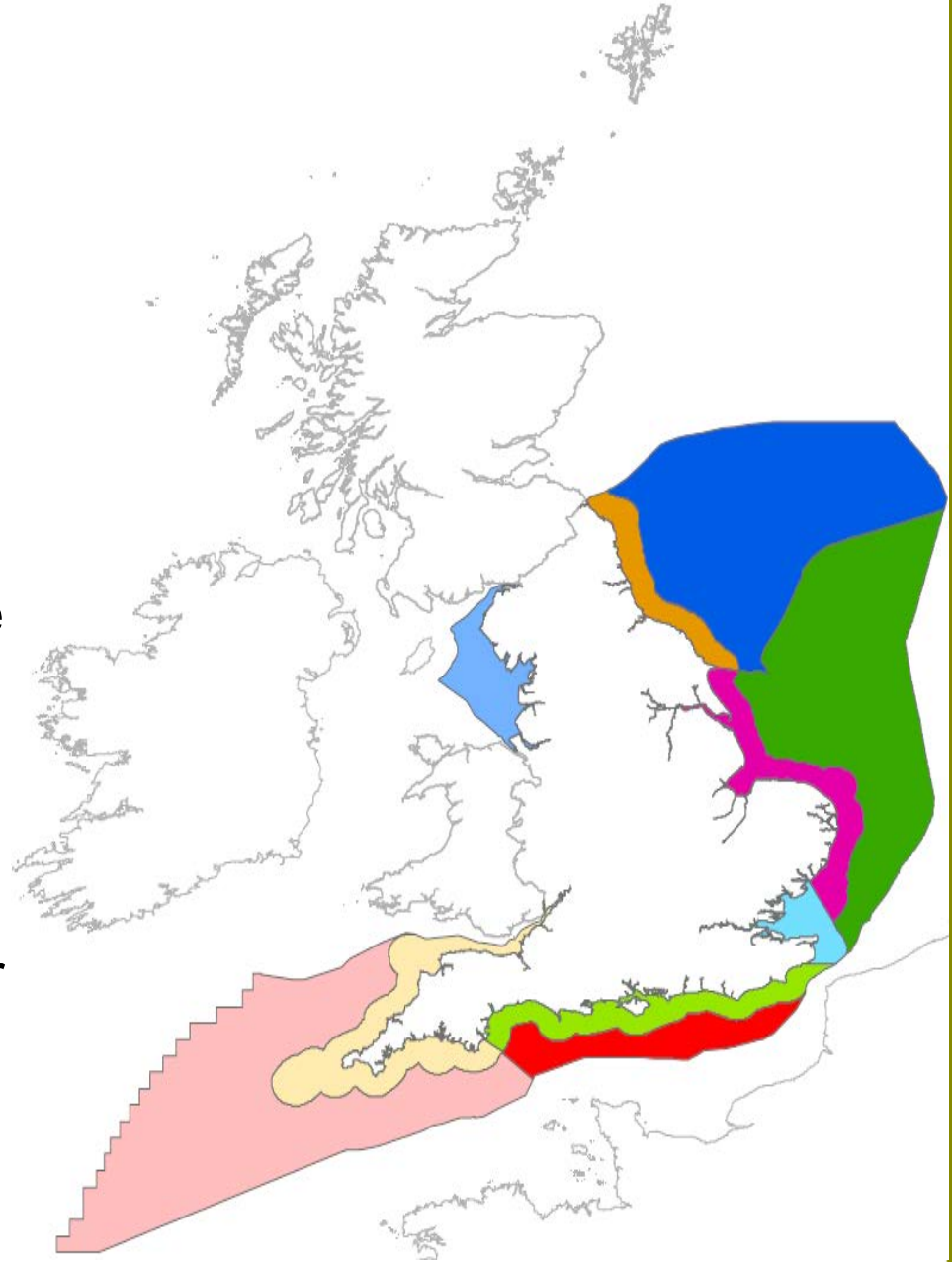
Where and When?

Areas/Boundaries

- English marine area 231,200 KM sq
- 11 areas (10 plans)
- Limit of tidal influence to UK REZ
- Inshore out to 12nm, Offshore >12nm 200nm (or agreed median line)

Overall timetable

- Estimate 2 years 9 months for each plan
- Assume two plan areas at a time (Inshore and Offshore)
- Evaluate ≤ 3 years \Rightarrow Review?



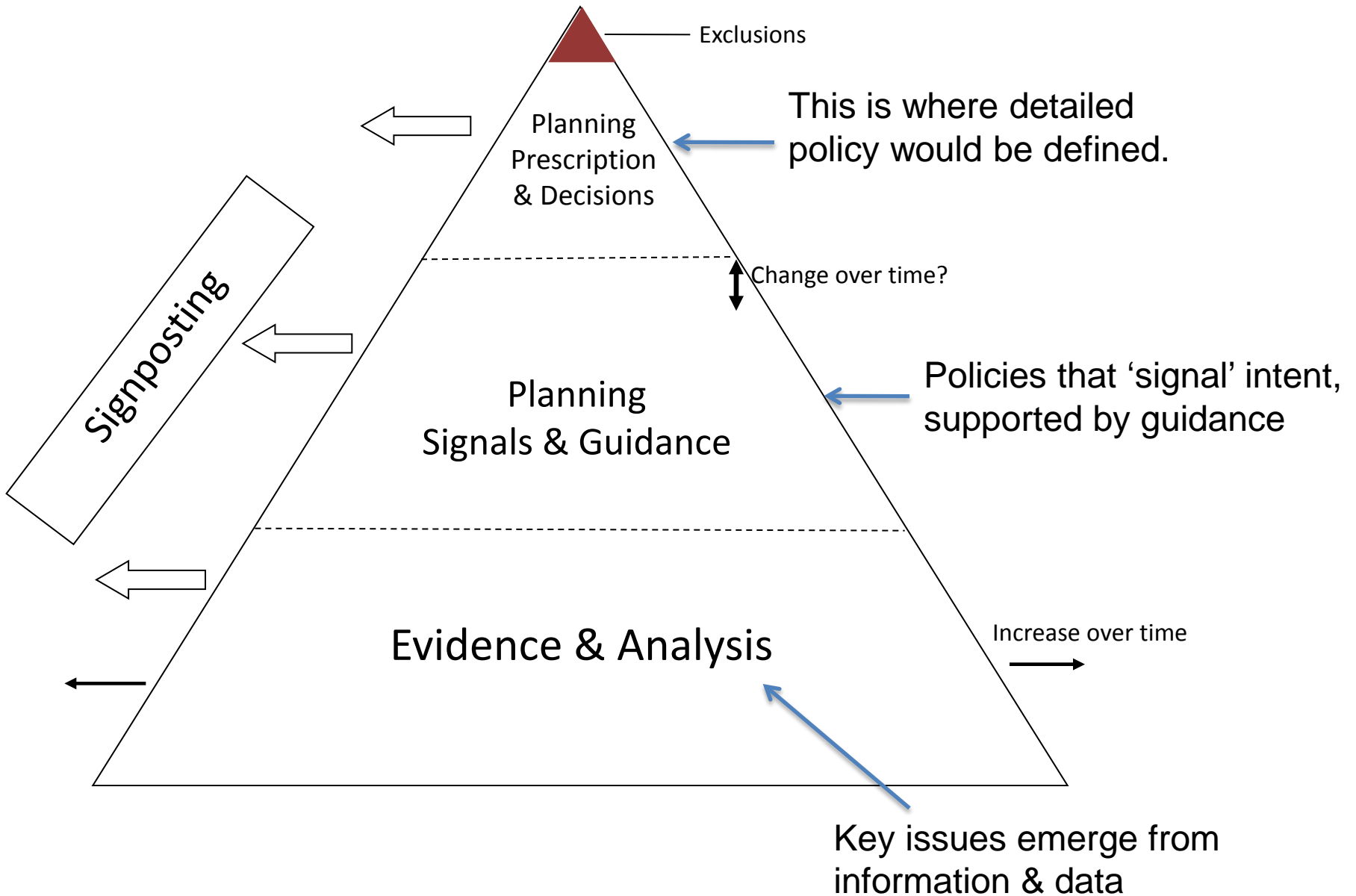
Stakeholder engagement – plan areas

- Statements of Public Participation (SPP)
 - informs people of how and when they can become involved
 - published April 2011 for the East
 - signed off by Government (Secretary of State, Defra)
- Local stakeholder engagement
 - Individual interests and groups
 - Work with existing partnerships, links to other projects (MCZs, R3)
 - Range of meetings, workshops, events and Liaison officers
 - Identifying contacts, evidence, issues, aspirations etc

Stakeholder engagement in the East - what have we done so far?

- Series of five **stakeholder workshops** attended by over 300 people
- **International workshops** with France, Belgium, Netherlands, Germany and Denmark and the US
- 350 **One-to-one meetings** with marine sector reps, such as, offshore wind, fishing, recreation, aggregates and cabling
- 12 public **drop-in sessions** across the East for over 900 people
- More than 2,000 comments from 70 different organisations in 2012 from one informal consultation
- Local **liaison officers** based in Lowestoft, Lincs and Grimsby met with hundreds of local stakeholders, attended meetings and events

Approach to marine planning



Effects of the East marine plans?

- Will inform and guide the regulation and use of the marine plan areas
- Support greater integration between marine activities and land use – including compliance with the Localism Act (Duty to co-operate)
- Applied through enforcement and authorisation decisions made by public authorities
 - Obligations on all public bodies that make decisions in England's marine area
 - If representations requested from MMO, regard must be given to the marine plans

Marine Planning Components



East Inshore and Offshore Draft Marine Plans Structure

- Ch 1 Background and overview
- Ch 2 Vision and objectives, their background and development
- Ch 3 Plan policies

For each policy the following is included;

- role and scope,
- maps where applicable
- Justification and signposting where applicable

Some objective led policies and some sector specific.

- Ch 4 Implementation and Monitoring, Review and Evidence

Supporting Documents

- Executive summary
- Statement of Public Participation
- Sustainability Appraisal
- Habitats Regulations Assessment
- Plan appraisal document
- Outline approach to implementation and monitoring

In development

- Beginners guide to the marine plans – linking interests to appropriate parts of the marine plan
- Policy Implications Table

Planning Progress



Timeline and engagement South Plan Areas

- South SPP adopted April 2013
- Spring-Summer 2013 Call for evidence
- Appointment of implementation and monitoring officers
- Spring 2013/Autumn 2013 – ongoing engagement in plan areas and data collection ★
- Autumn/Winter 2013 – Evidence and Issues identification
- Winter 2013/Spring 2014 – Evidence and Issues finalised
- Summer 2014 – Vision and Objectives development ★
- ???? – Options and policies development
- Spring 2015 – Draft Plan development

★ Likely workshop

Lessons Learnt

- Many issues emerge in the marine planning process
- Only some of these are able to be addressed through marine planning
- South marine plans SPP – No informal consultation on the document
- Engagement covered across the team, greater use of sector leads.
- Future plan areas –not forgotten part of the overall delivery of 10 marine plans by 2021 no timeline outside of this
- Changing context is the norm: e.g. MSP directive development in progress

North West – summary statistics

- 7 per cent of SAC and 24 per cent SPA by area.
- 28 per cent of existing wind farms by area which with consented extensions will cover 5 per cent of the plan area. One Round 3 zone.
- 10 per cent by number of aggregate production areas.
- 11 per cent of port locations including Liverpool
- 12 per cent by number of shellfish production areas, of local importance for jobs and economy.
- BUT.....high concentration due to comparatively small spatial area so very DENSE activity levels

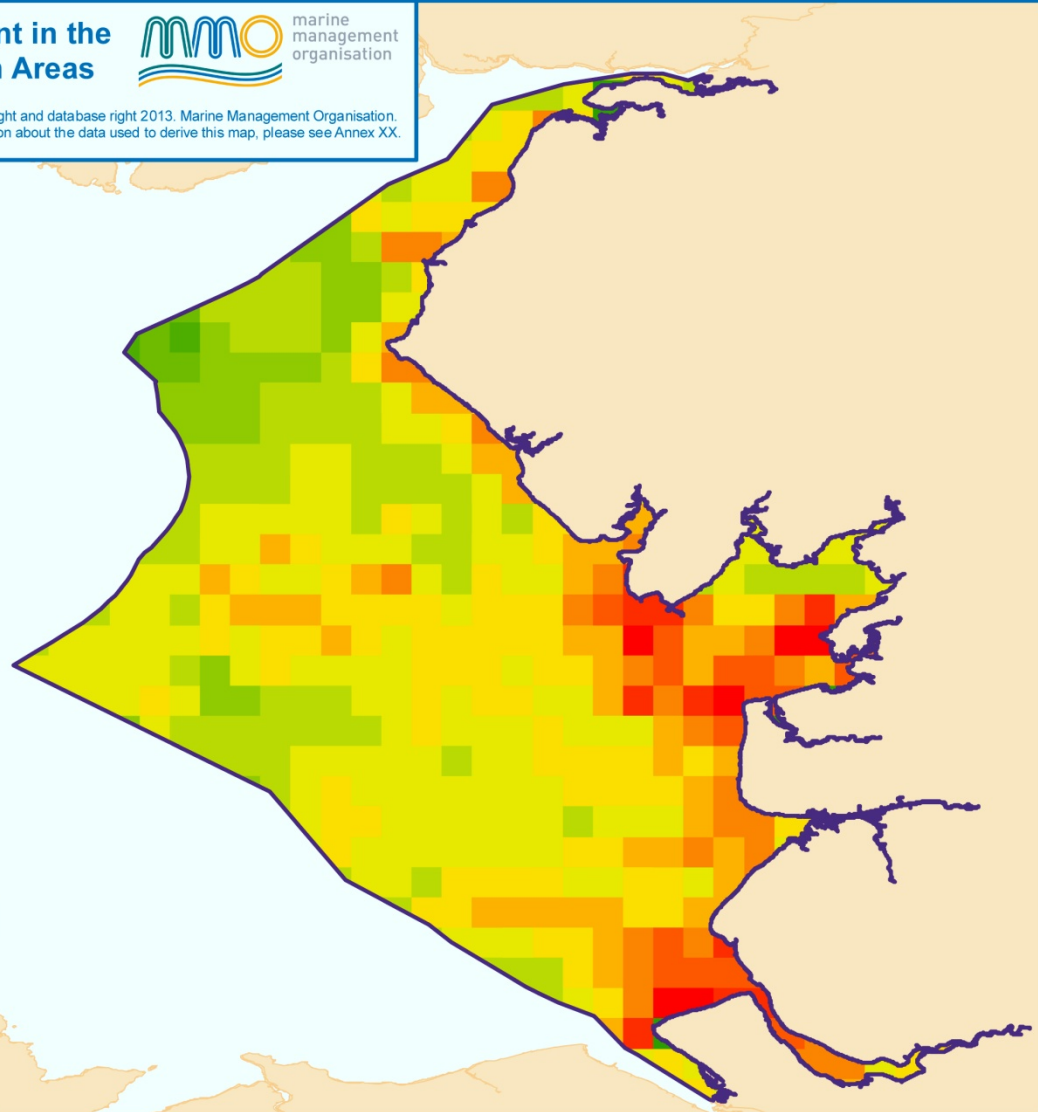
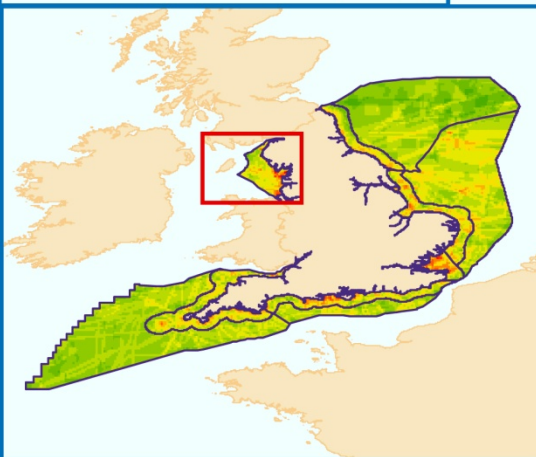


North West – busyness map

Figure XX: Number of activities present in the North West Inshore and Offshore Plan Areas



Contains Ordnance Survey and UK Hydrographic Office data © Crown copyright and database right 2013. Marine Management Organisation. VLIZ (2013) Maritime Boundaries Geodatabase, version 5. For more information about the data used to derive this map, please see Annex XX.



North West – when will planning start?

- Honest answer – I don't know...because
- Each time all areas are reassessed using the decision streams as identified by Defra
 - Stakeholder engagement in plan area selection.
 - Assessment of coastal stakeholder partnerships.
 - Technical report of economic, environmental and social information.
 - Implications of current and proposed marine protected areas.
 - Future pressures and their implications.
 - Implications of planning inshore and offshore together.
 - Implications of planning with bordering nations.
- Decision making for where next will be in late 2014

North West – how you can help

- Build on the great work of the 'Irish Sea Issues and Opportunities' Report
- Feed into consultations – where appropriate on existing marine planning process
 - Draft East Marine Plans
 - Evidence base for the South Marine Plan Areas
 - Further consultation stages
- Any appropriate reports/sources of data
 - let us know
- Further areas of investigation
 - Suggestions welcome

Thank you for listening



Contact us

www.marinemanagement.org.uk/marineplanning

Email: planning@marinemanagement.org.uk

Telephone:

0191 376 2790