



ISLE OF MAN  
**MARINE PLAN**  
SECURING A SUSTAINABLE FUTURE



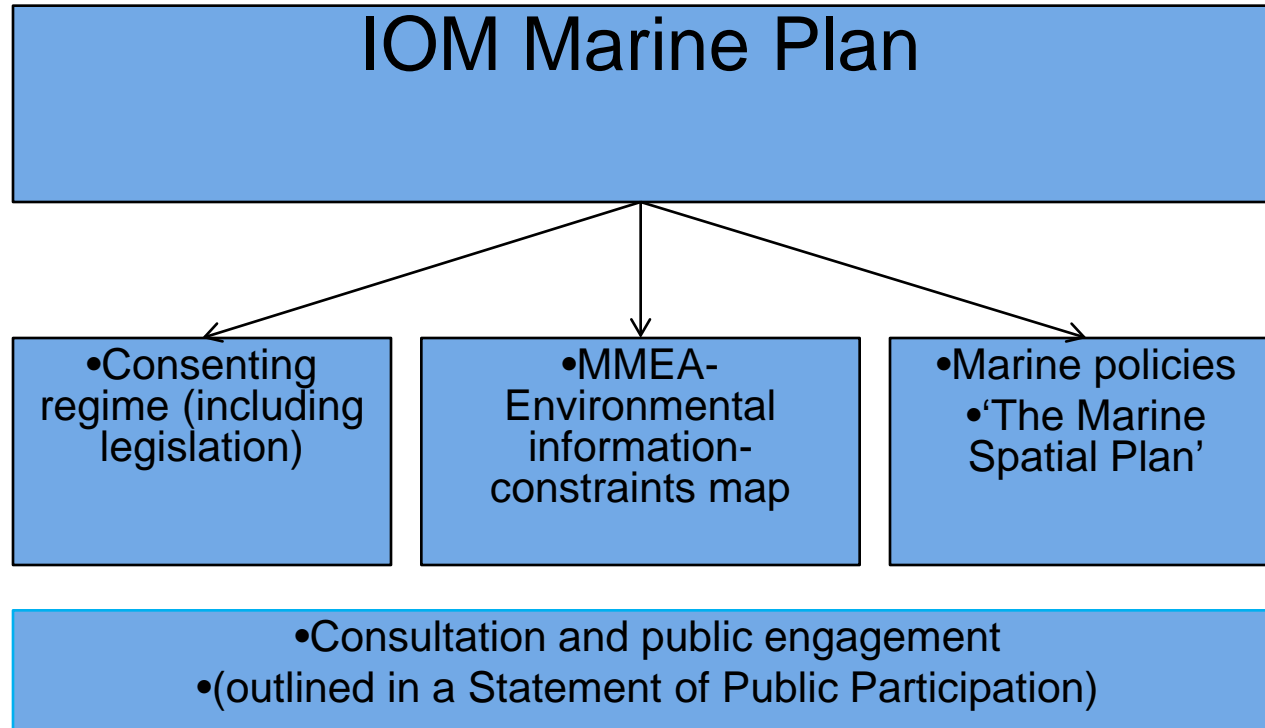
# The Marine Plan for the Isle of Man

Dr Peter McEvoy  
Marine Spatial Planning Project Officer  
Isle of Man Government

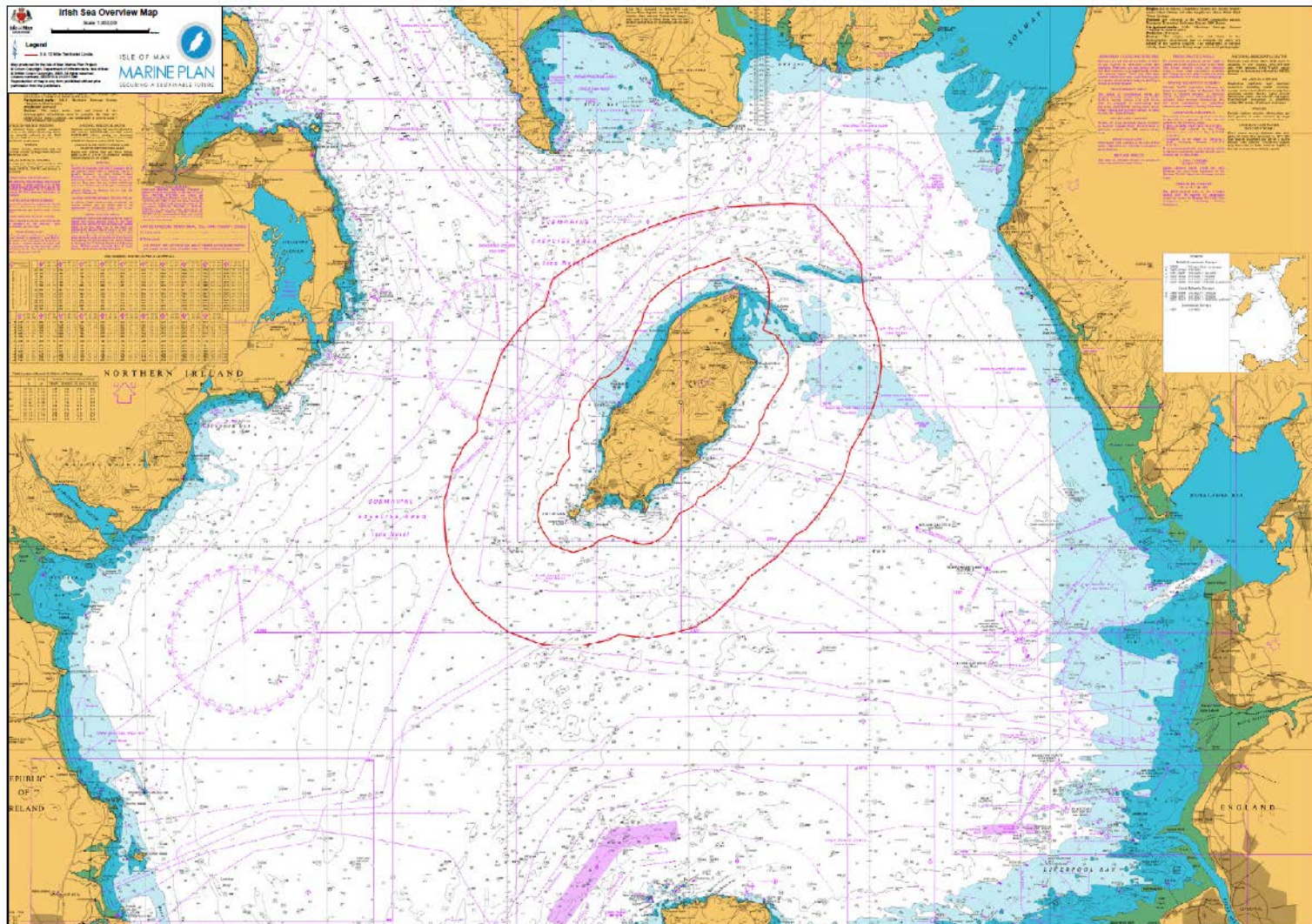
# Aims of the project

- ☐ To develop a consenting regime for any future developments within Manx waters
- ☐ To develop a Marine Spatial Plan to consider current and future uses of Manx waters
- ☐ To help identify suitable areas for development by locating current activities/constraints

# Project structure



# Large area of seabed

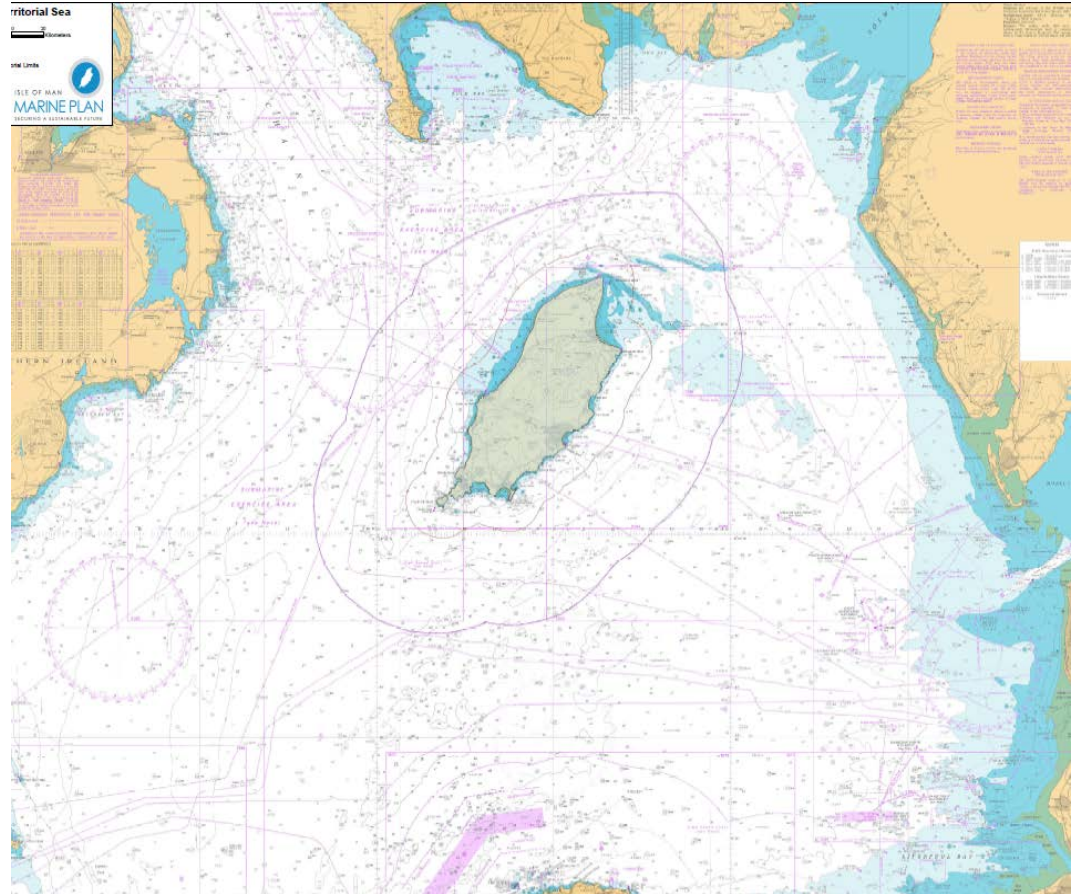


87.5% (4000sq km) of Manx territory is underwater



# The Isle of Man

- ☐ Crown Dependency  
Ministry of Justice
- ☐ Not in EU
- ☐ Signed up to  
Conventions
- ☐ Collaborate through  
BIC



# Conventions

- ❑ OSPAR (was Oslo and Paris Agreement – now extended to NE Atlantic)
- ❑ Bonn Migratory Species – Agreement on Small Cetaceans (ASCOBANS)
- ❑ Ramsar wetland convention (shallow sea)
- ❑ Convention on Biological Diversity



# Isle of Man Marine Plan

- ❑ Cross government project (3 depts)
- ❑ Dept Environment, Food and Agriculture
  - Environment
  - Fisheries
- ❑ Dept of Economic Development
  - Renewable energy
- ❑ Dept of Infrastructure
  - Planning & Building Control
  - Harbours (owner of the seabed)



# Principles of the Marine Plan

- ❑ Enabling sustainable economic development
- ❑ Based on the ecosystem approach
- ❑ Developed in a joined up way by the Manx government
- ❑ Inclusive of stakeholders
- ❑ Irish Sea context with transnational co-operation



# Options for consenting process- 2010

- ☐ Status Quo – decision via Territorial Seas Committee
- ☐ Development of Primary Legislation i.e. a Marine Bill
- ☐ Development of Secondary Regulations under existing TCPA 1999



# Current Consenting Process

- ☐ Application for seabed lease submitted to Chair of Territorial Seas Committee (Director of Harbours)
- ☐ Application circulated to members for consideration
- ☐ Comments reported to Chair for consideration
- ☐ Recommendation to Minister for Department of Infrastructure from Chair
- ☐ Ministerial decision on the agreement (or not) for lease of seabed
- ☐ Not a statutory process
- ☐ lacks the clarity of a consenting process

# Confirmed consenting process- 2012

- ❑ Extension of the Town and Country Planning Act via 'Territorial Sea' Regulations (Summer 2013)
- ❑ A 'Marine Development Procedure' Order (Autumn 2013)
  - Applications will be determined via the recommendation of an appointed inspector to the Council of Ministers.
- ❑ Marine Development (Fees for Application) Order (Sept 2013)
- ❑ EIA (Territorial Sea) Regulations (Winter 2013)

# Consultation on the new Regulations

## ❑ Full consultation on all aspects of the Regulations- Oct 2012

- Secondary Legislation
- Definition of development (no Permitted Development)
- Development Procedure
- Requirement for EIA
- Fees & Fines

*(Updated letter to consultees April 2013- requirement to include Permitted Development)*

<http://www.gov.im/ConsultationDetail.gov?id=342>

## ❑ EIA Regulations Consultation pending (June 2013)



# Manx Marine Environmental Assessment

- ❑ Similar to a Strategic Environmental Assessment for Manx waters
- ❑ Extensive stakeholder collaboration and consultation 2011-12
- ❑ Consultation complete December 2012
- ❑ Final version in the process of being updated



AIM to bring together the baseline information currently available for Manx territorial waters.

Covering;

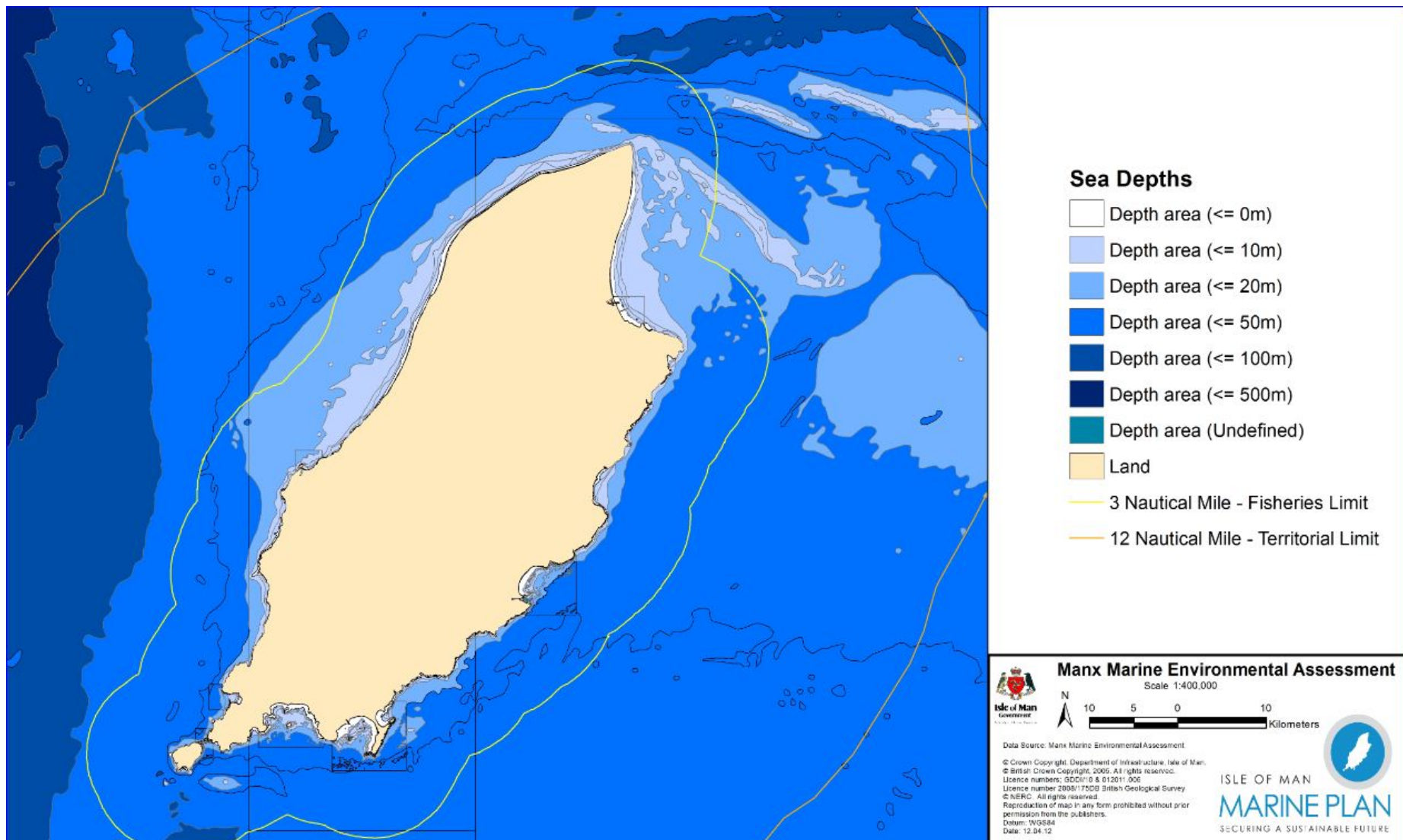
- ☐ Physical environment
- ☐ Marine renewable energy opportunities
- ☐ Commercial fisheries
- ☐ Infrastructure
- ☐ Legislation
- ☐ Marine habitats and species

# MMEA output

- ❑ Open access document
- ❑ 23 chapters and 150 expert contributors
- ❑ A summary of the current state of local marine knowledge
- ❑ Building local data sharing e.g. marine mapping
- ❑ Identifies issues and constraints in Manx waters
- ❑ Highlighting gaps in local knowledge
- ❑ A valuable tool for assessing development opportunities in Manx waters

<http://www.gov.im/transport/planning/msp/mmea.xml>

# MMEA- Bathymetry



ISLE OF MAN  
Government

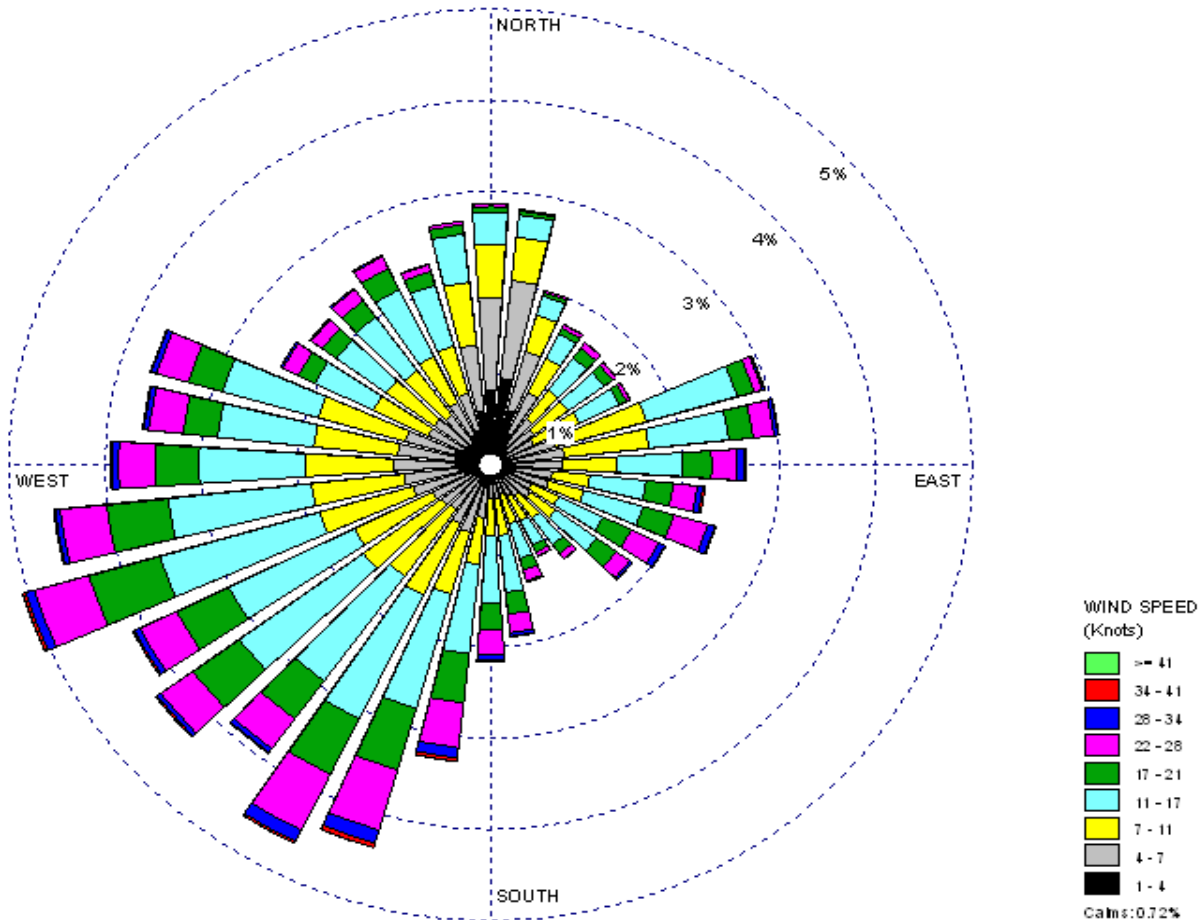
Reilrys Eilan Vannin



# MMEA- Meteorology

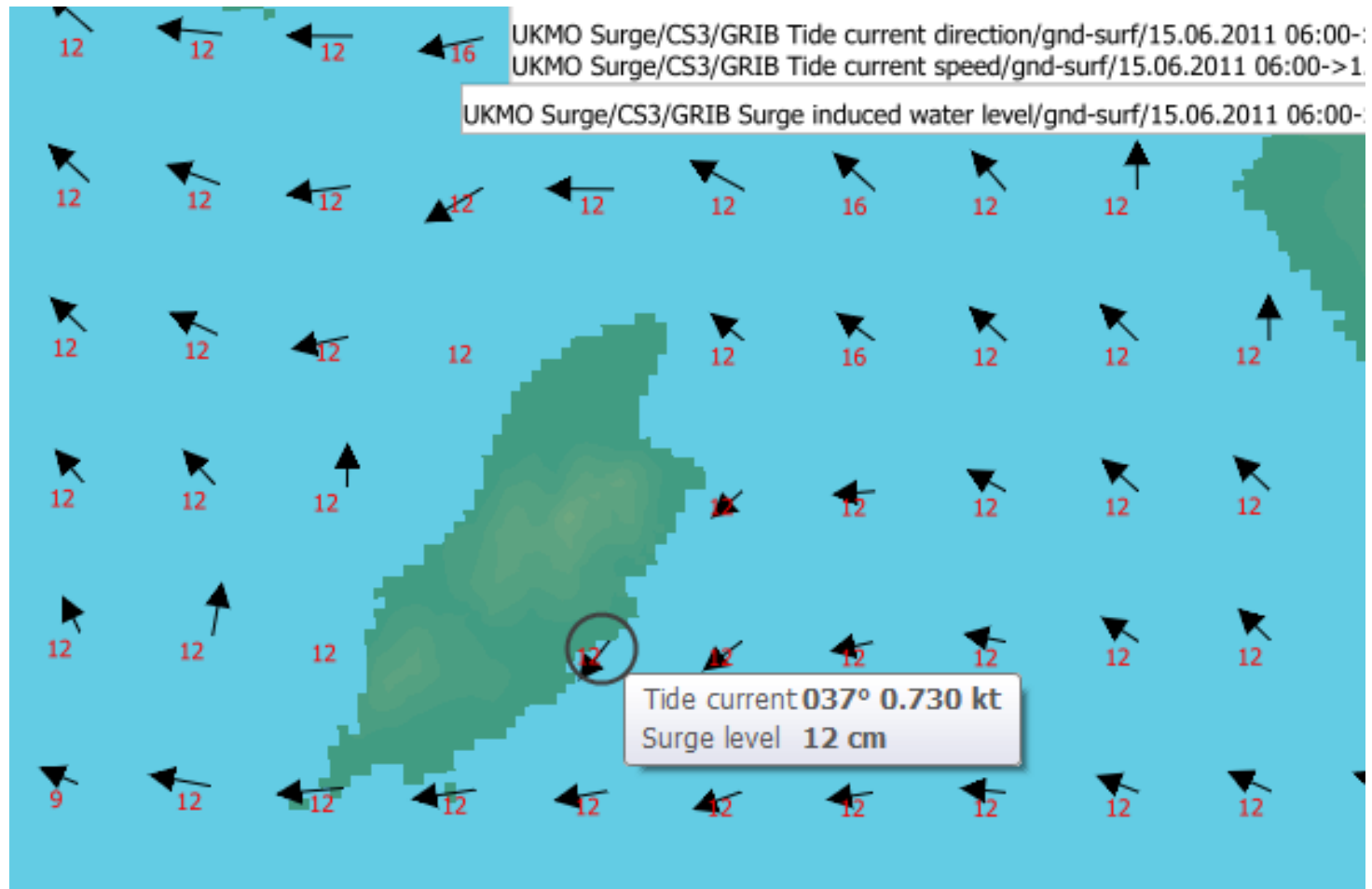
WIND ROSE PLOT:  
Hourly Wind Data Ronaldsway Isle of Man 1966 - 2007

DISPLAY:  
Wind Speed  
Direction (blowing from)



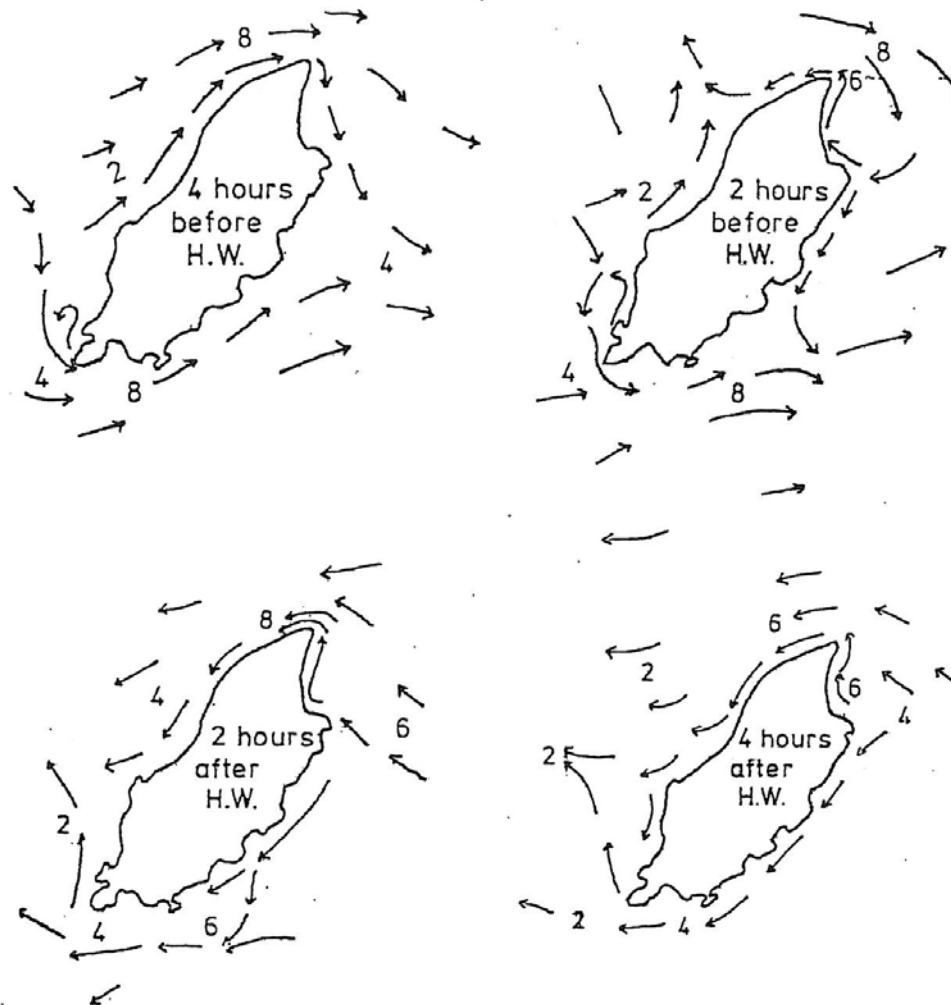
**Wind rose plot of hourly wind data,  
Ronaldsway, IOM 1966-2007**

# MMEA-current monitoring



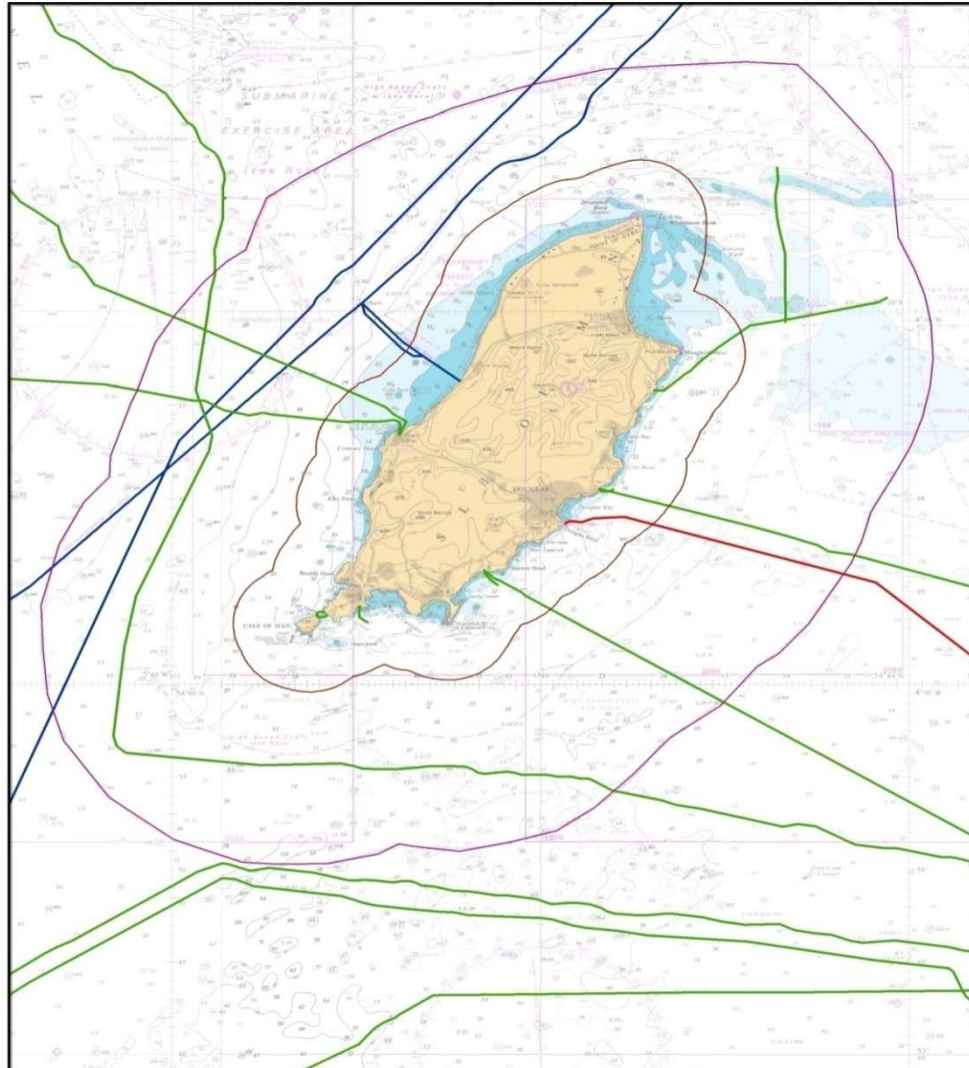
Example of CS3 surge model data for Manx Coastal waters as part of the 'Floodwatch' warning systems

# MMEA-historic studies



•General tidal flow around the Isle of Man, from Brown (1951).

# MMEA- Cables and pipelines

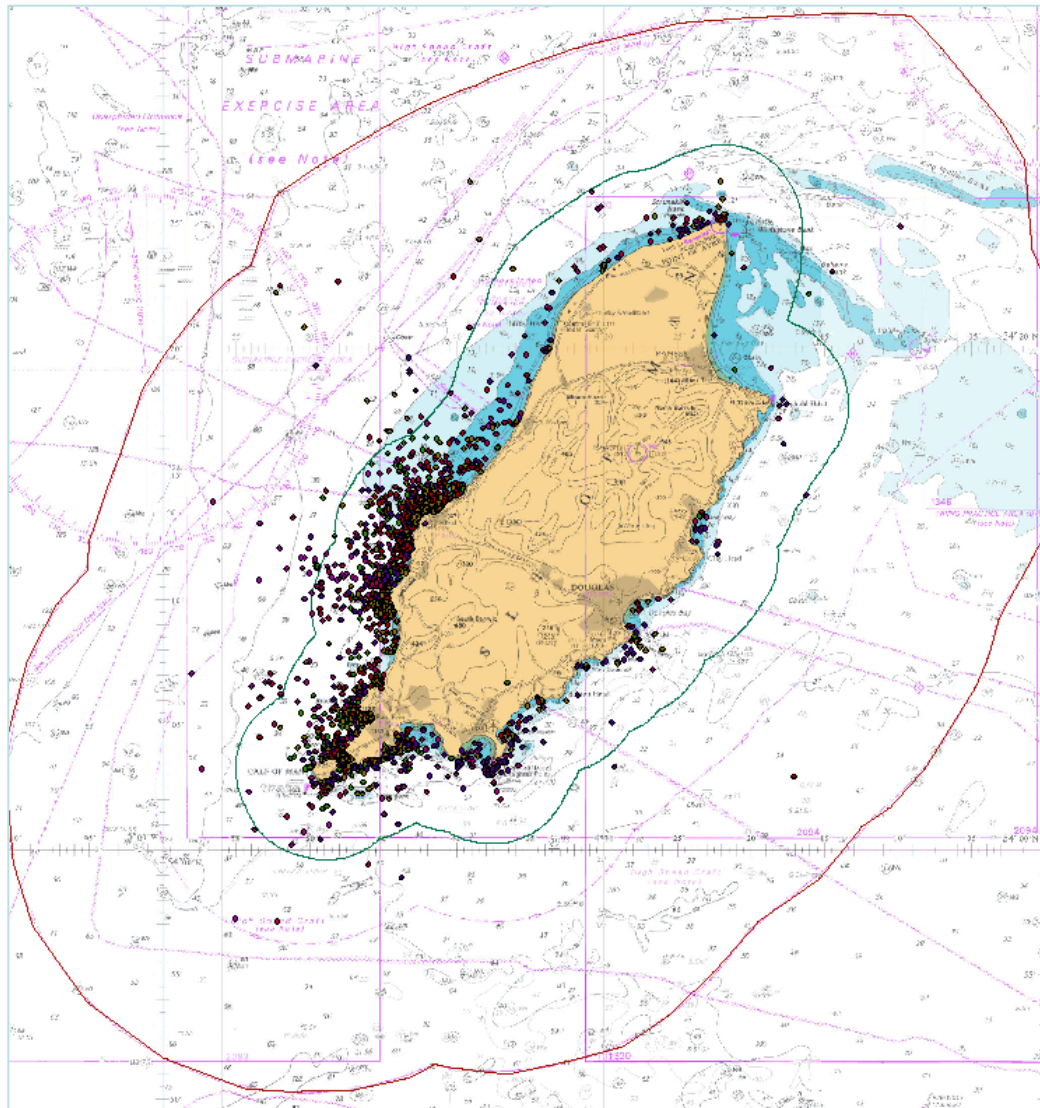


Submarine cables and pipelines (current use and redundant) in Manx waters. Source: UKHO 2012.



[illegible]

# MMEA- Basking shark public sightings



Isle of Man  
Government

Reilrys Eilan Vannin



ISLE OF MAN  
**MARINE PLAN**  
SECURING A SUSTAINABLE FUTURE



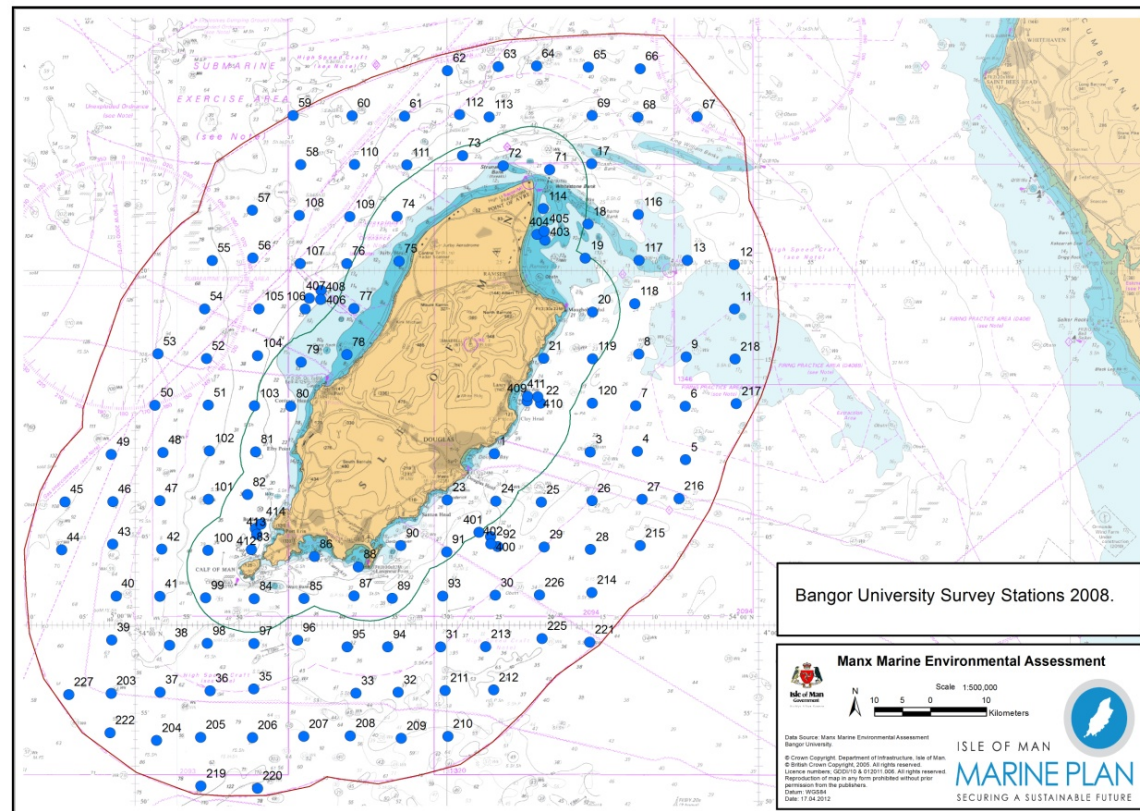
# Seabed ecology

Points surveyed by Bangor University for the identification of seabed habitats and associated animal communities.



7,325 still images from 150 survey points have been analyzed.

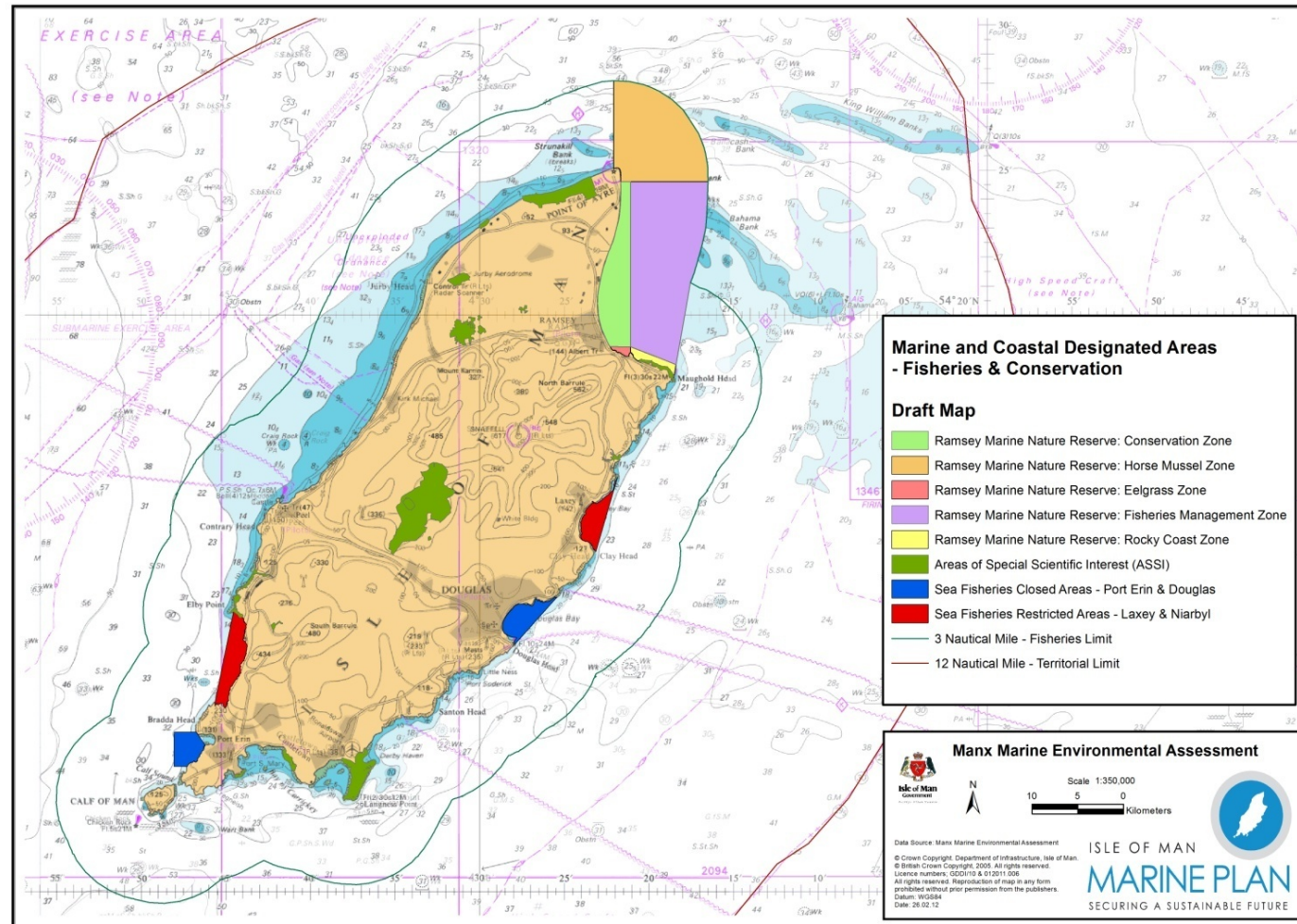
NB: Locations of more recent survey work are not included on this map.



# Statutory designations

## Fisheries and conservation areas

### Draft map





# Ramsey Marine Nature Reserve

- ❑ Eelgrass Zone (pink)
- ❑ Horse Mussel Zone (orange)
- ❑ Conservation Zone (green)
- ❑ Fisheries Management Zone (purple)
- ❑ Rocky Shore Zone (lime green)

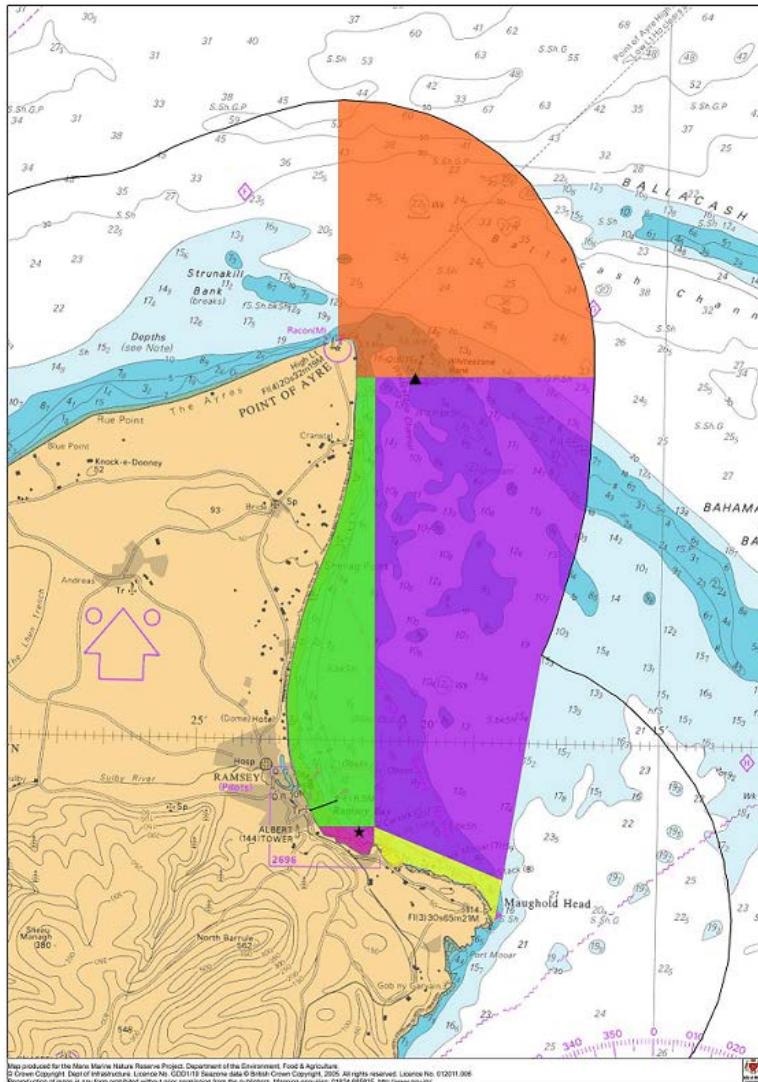
Total area = 94.5km<sup>2</sup>

Highly protected = 47km<sup>2</sup>

Fisheries Management Zone = 47.5km<sup>2</sup>

Whole area = 2.4% of Manx Waters

Highly protected area = 1.2% of Manx Waters



Isle of Man  
Government

Reilrys Eilan Vannin



ISLE OF MAN  
**MARINE PLAN**  
SECURING A SUSTAINABLE FUTURE

# Marine Plan

- ❑ A high level policy framework to guide the future placement and development of marine activities
  - Backed up by constraints data from the MMEA
- ❑ Will provide clarity to current marine-users and potential developers
- ❑ Awaiting enactment of Territorial Sea Regulations- Consultation expected to begin mid-2013

# Marine Plan summary of progress

## 2010

- Determine legislative framework for Isle of Man Marine Plan

## 2011-2012

- Review requirements for marine legislation
- Draft legislation
- Consult on draft legislation
- Draw marine data together for inclusion in MMEA

## 2013

- Publish MMEA
- Develop Marine Plan framework
- Enact the legislation
- Consult on draft plan and policies

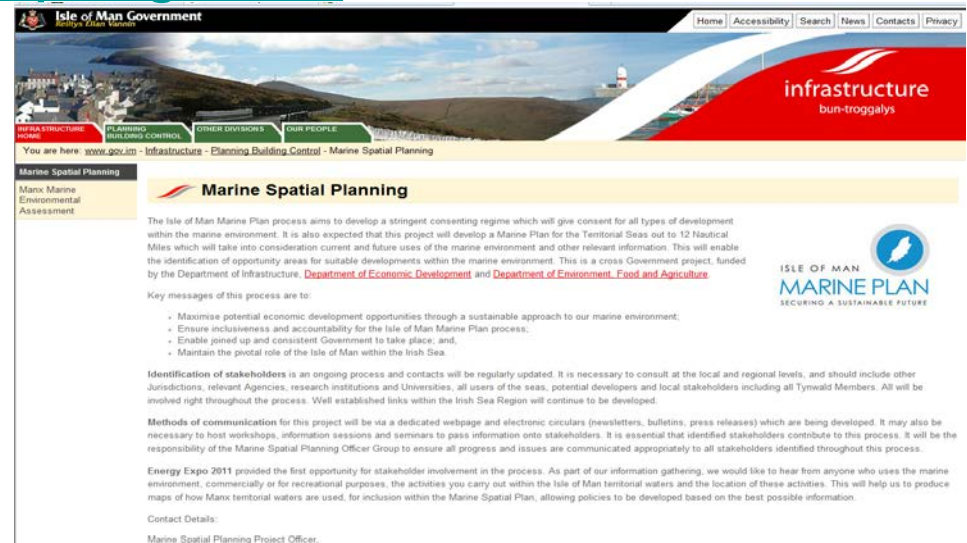
# Key Messages

- ❑ Develop a fit-for-purpose consenting process
- ❑ Maximise potential economic development opportunities using sustainable approach
- ❑ Stakeholder inclusiveness and public accountability
- ❑ Develop long-term cross-Government policies for marine environment
- ❑ Develop the Isle of Man's pivotal role in the Irish Sea in partnership with adjacent jurisdictions

# Further information

[www.gov.im/transport/planning/marinespatialplanning](http://www.gov.im/transport/planning/marinespatialplanning)

Email project officer on [msp@gov.im](mailto:msp@gov.im)



[Peter.mcevoy@gov.im](mailto:Peter.mcevoy@gov.im)

